

Samsung phones - Special Modes

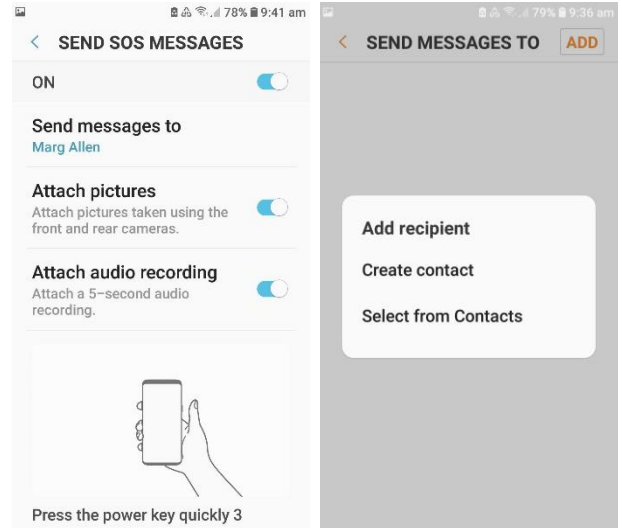
Do you own a Samsung phone? You can select two useful modes for use in an emergency situation - *SOS mode* and *Emergency mode*.

SOS Mode

With SOS mode activated you can easily send an automated message a contact. It will include your location and, if you choose, attach pictures taken with front and rear camera, and an audio recording.

To activate SOS mode:

- Open *Settings* > *Advanced features* > *Send SOS messages* and *Turn on*
- Agree to the Terms & Conditions
- Then Tap *Send messages to* > *Select from contacts* to choose a contact to send SOS messages—select an existing contact or create a new one, then Tap 'Done
- Turn on/off *Attach pictures* and *Attach audio recording* as you want.



Then whenever you want to auto-send an SOS message, press the power button three times quickly.

*Note that pressing the Power key **twice** opens the camera. Pressing the Power key **3 times** sends SOS messages, make sure you only press the Power key twice when you want to use the camera.*

Emergency Mode

Emergency mode enables you to extend your device's standby time when you are in an emergency situation, and you want your device to conserve power for as long as possible.

When this mode is activated, the screen's brightness will decrease and some of the device's functionality will be limited in order to conserve your battery's charge. The home screen will be changed to a black theme to reduce battery consumption.

In Emergency mode, you will be able to:

- Use the Phone app to make a call to a specified contact
- Make emergency calls
- Turn on the flash
- Sound alarms
- Send your location information to others in a message.

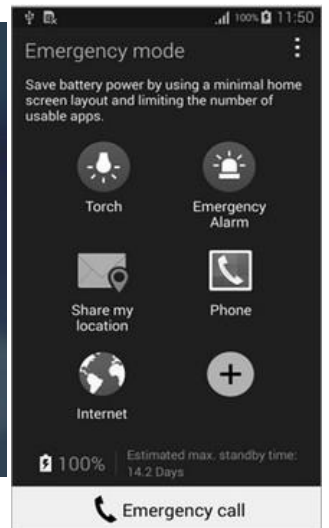
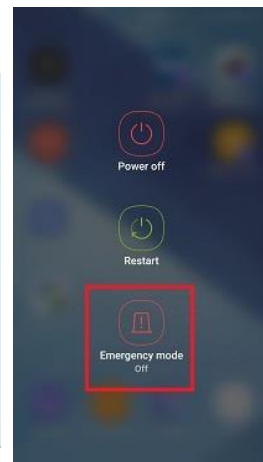
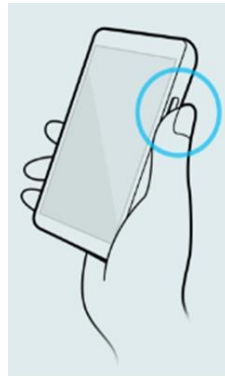
Turn on Emergency Mode

(The images may not match your device exactly).

Press and hold the Power button until you see the power menu options

Tap Emergency Mode

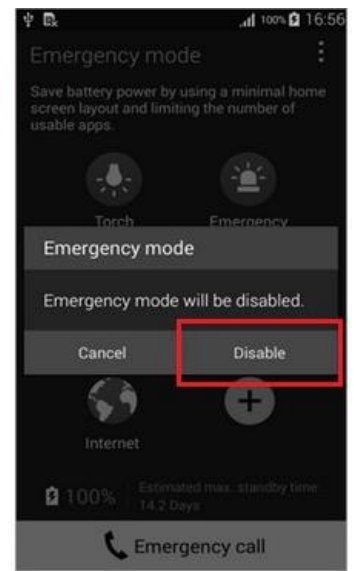
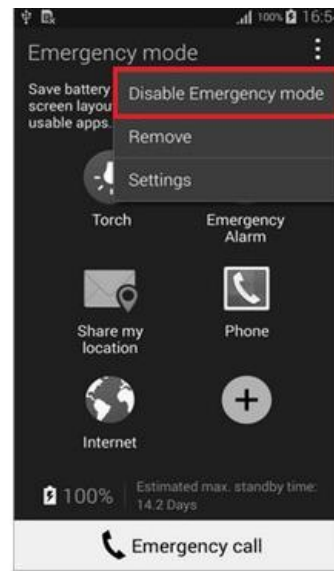
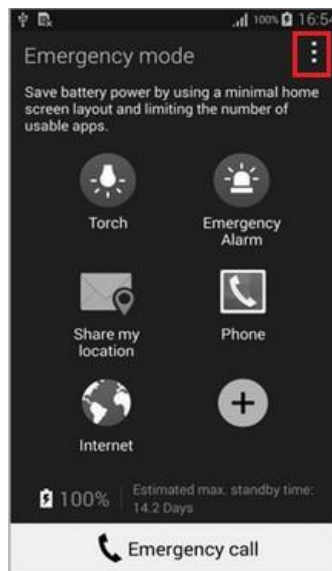
You will now see the Emergency Mode home screen, including an estimate of your battery standby time.



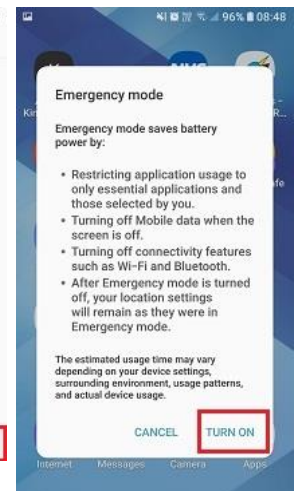
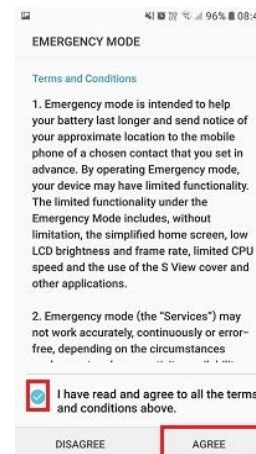
Turn off Emergency Mode

To turn off Emergency Mode, tap the three dots on the top right corner of the screen, then select

Turn off emergency mode or *Disable Emergency Mode*, then *Disable*.



If you are using Emergency Mode for the first time, you will first need to *Agree* to the Terms and Conditions, then tap *Enable* OR *Turn On*



Sources:

<https://www.samsung.com/au/getstarted/advanced/enable-sos-messages/>

<https://www.samsung.com/au/support/mobile-devices/what-is-emergency-mode/>