

Windows 10 – Internet Explorer

Set Google as the default Search Engine

... and set your home page to Google

The default browser in Windows 10 is Microsoft Edge. However, you can still use Internet Explorer if you prefer it. The following articles explain how to find Internet Explorer in Windows 10, and how to set Internet Explorer as the default browser:

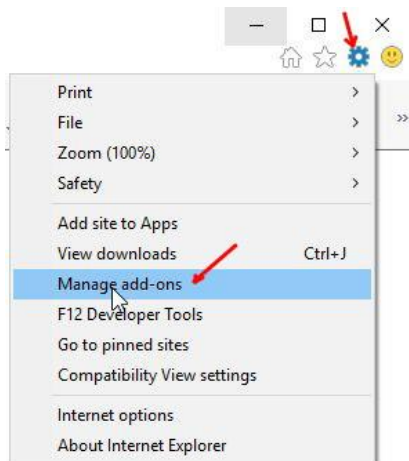
<http://euroscug.org/files/2015/07/W10-Where-is-Internet-Explorer.pdf>

<http://euroscug.org/files/2015/07/W10-Choose-a-different-default-web-browser.pdf> .

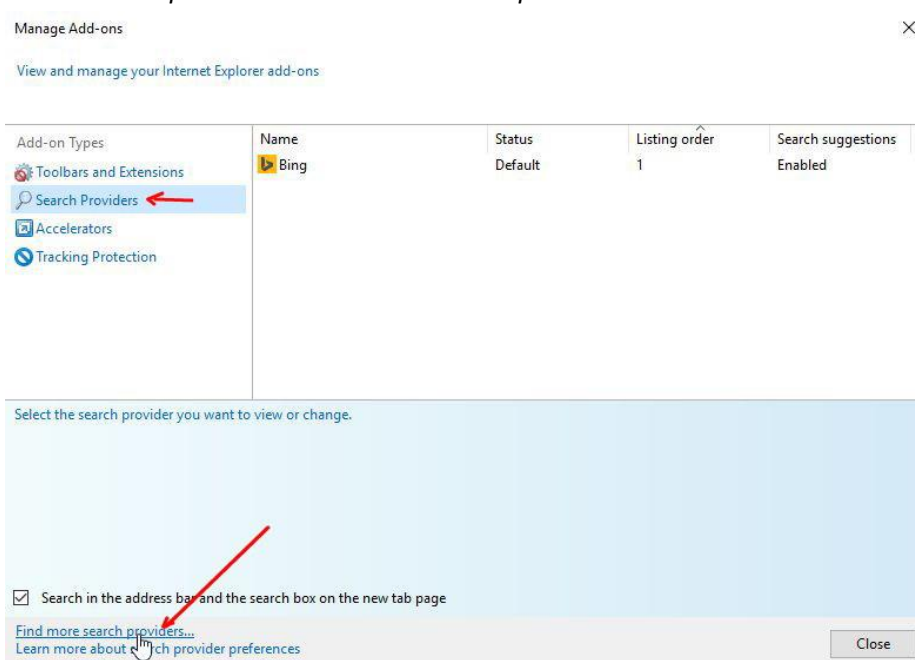
If you use Internet Explorer rather than Microsoft Edge browser in Windows 10, Internet Explorer uses the Bing search engine by default when you type in a query in the address bar. This article explains how to set Google as the default search engine, and how to set the *Home page* to Google.

Set Google as the default search engine

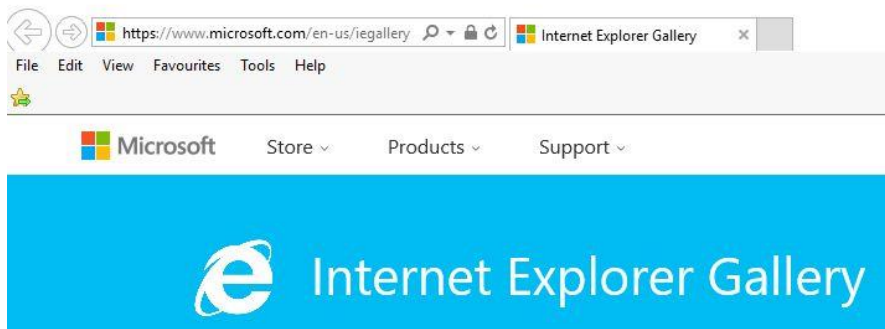
Click the gear icon top right > *Manage add-ons*



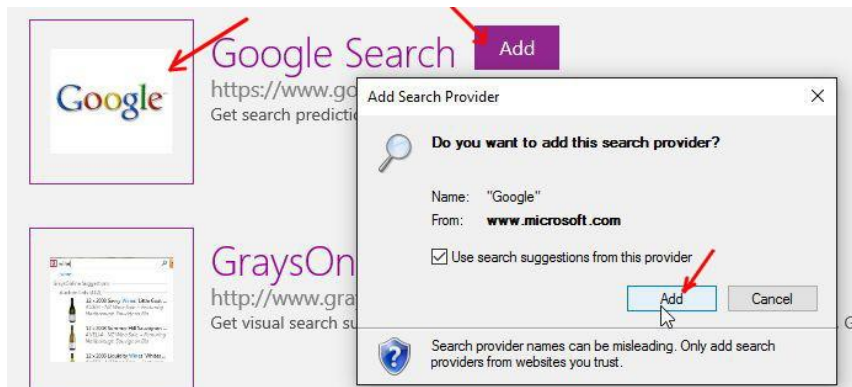
Select *Search providers* > *Find more search providers*



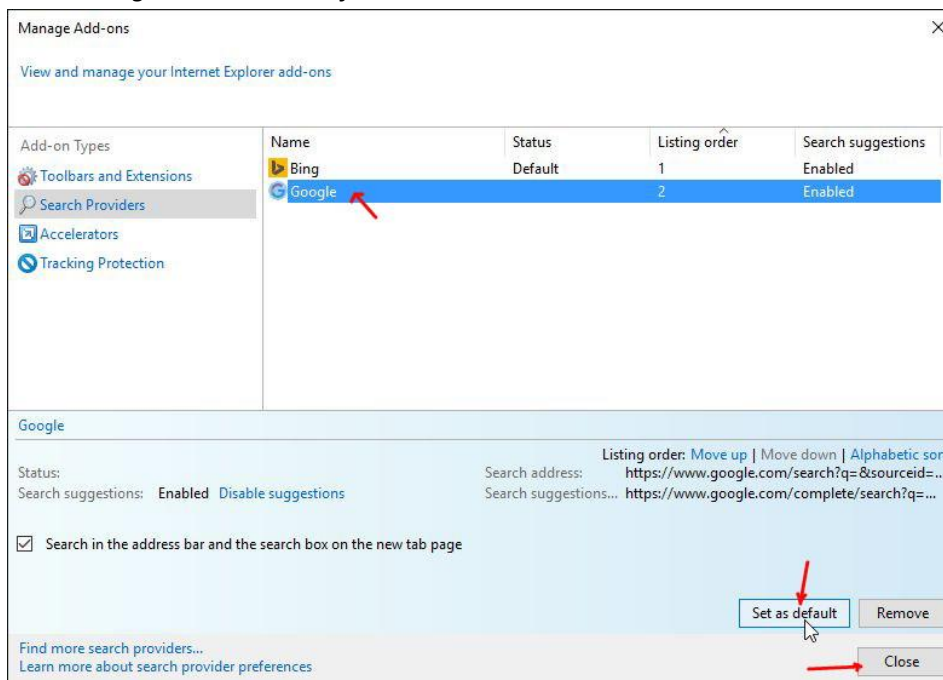
Internet Explorer Gallery should then appear



Scroll down to *Google Search*, click the *Add* icon, then in the *Add Search Provider* window that appears, click *Add*



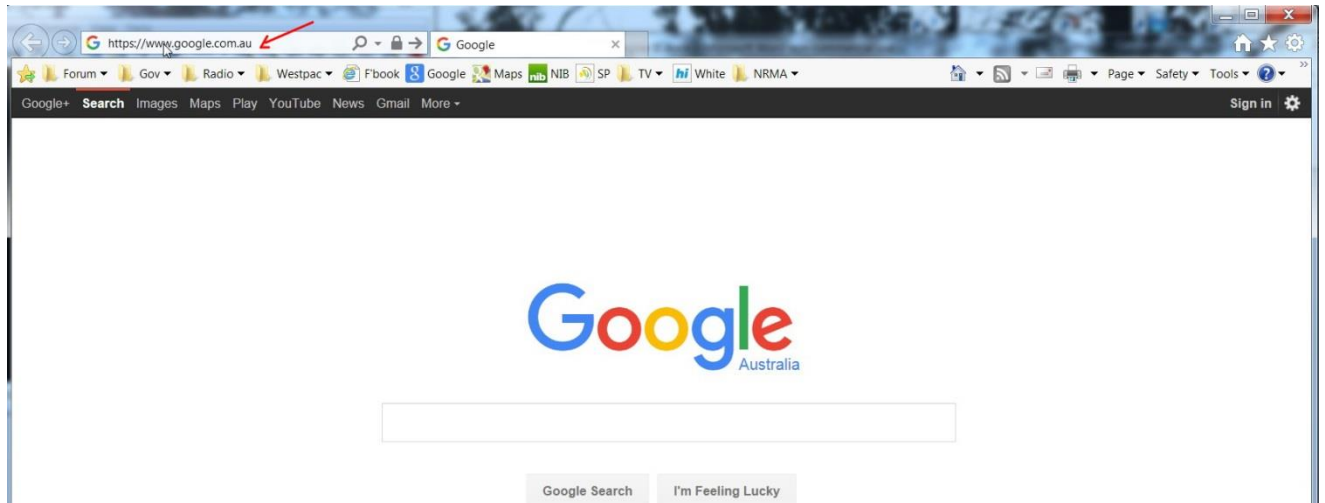
Get the *Manage Add-ons* windows back (you have to reopen the Add-ins window to see Google), select *Google* then *Set as default* then close the window



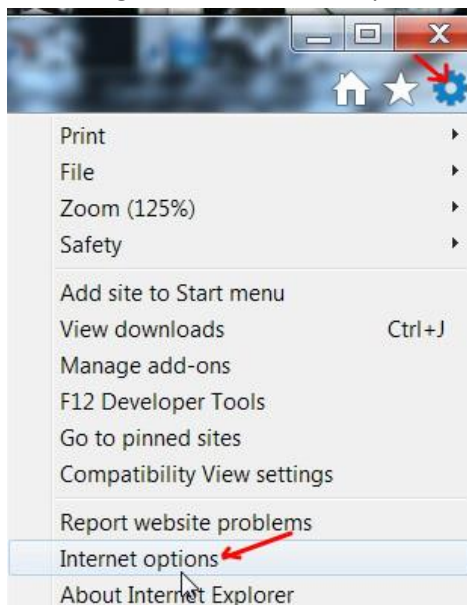
Set your Home Page to Google

If you also want Google to open automatically when you start Internet Explorer, you need to set your home page to Google:

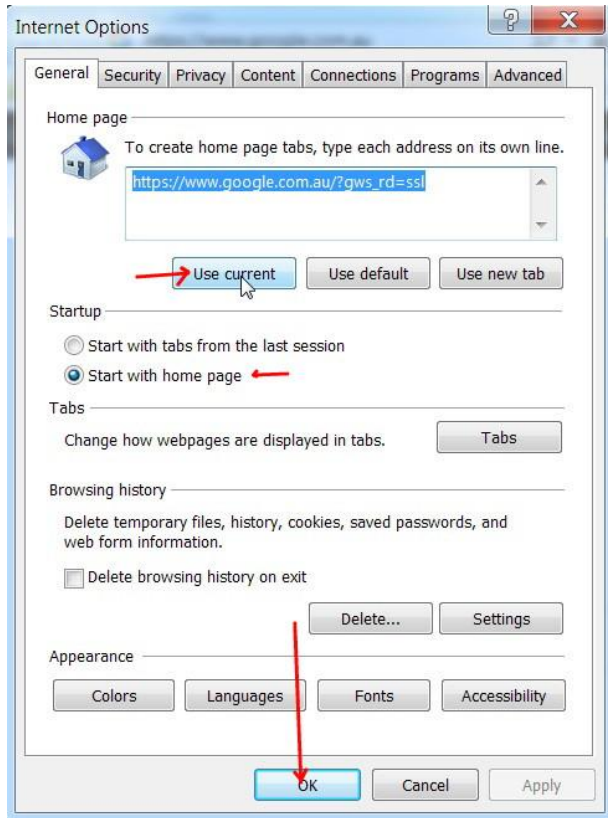
Open Internet Explorer and go to Google.com. When Google page is displayed close all other tabs and any other Internet Explorer windows so that only the Google page is displayed.



Click the gear icon > Internet options



On the General tab > *Home page*, click *Use current*, then *OK*



The next time you open Internet Explorer, the Google page will be displayed.