

Windows 10 – Microsoft Edge Browser

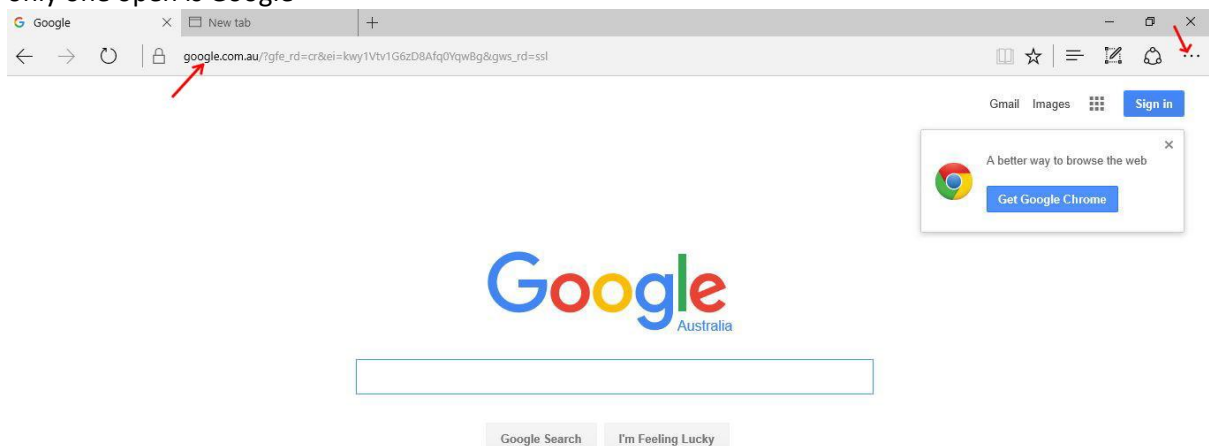
Set Google as the default Search Engine

... and set your Home page to Google

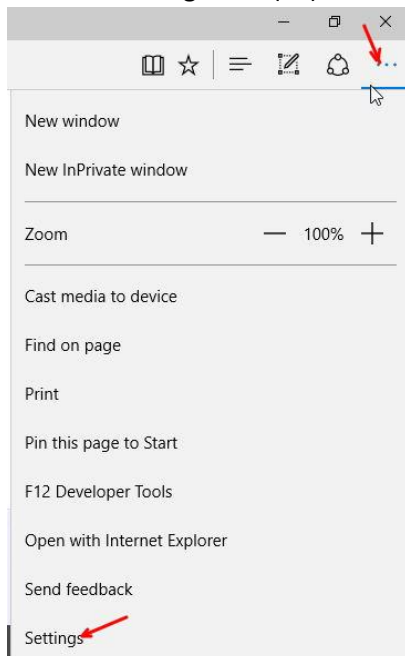
The default browser in Windows 10 is Microsoft Edge. If you use Edge browser in Windows 10 it uses the Bing search engine by default when you type in a query in the address bar. This article explains how to set Google as the default search engine, and how to set the Home page to Google.

Note that if you change the default search engine in Edge, Cortana won't talk to you.

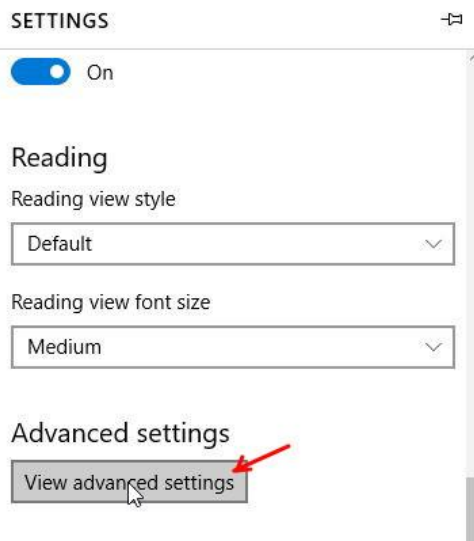
Open Edge, navigate to google.com. Close all other tabs and any other Edge windows so that the only one open is Google



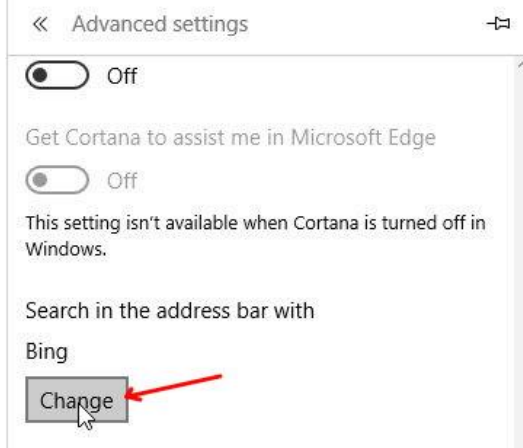
Click the settings icon (...) then click Settings



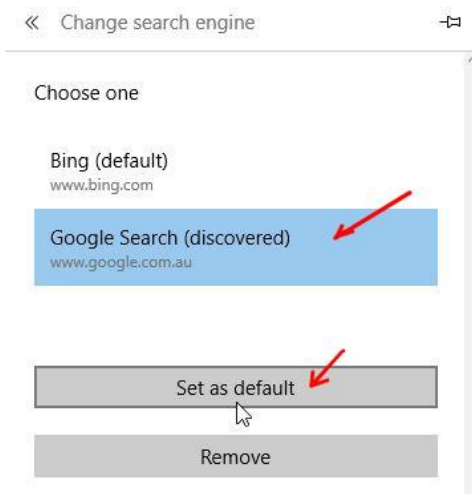
Scroll down to and click *View advanced settings*



Scroll down to *Search in the address bar with*, click *Change*



Select *Google Search (discovered)* then *Set as default*. Note that Google will not appear here unless the Google page is actually displayed – that is why we opened it first.

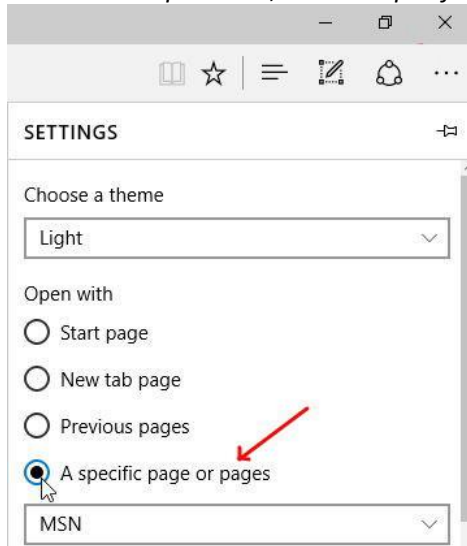


Set your Home Page to Google

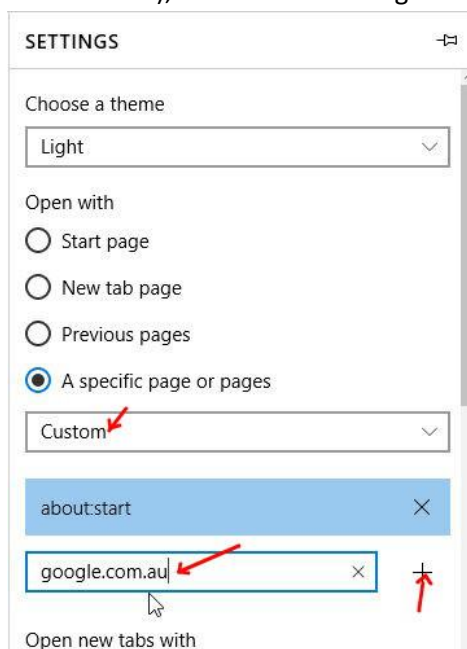
If you also want Google to open automatically when you start Microsoft Edge, you need to set your *Open with* page to Google:

Click the settings icon (...) then click Settings (as before)

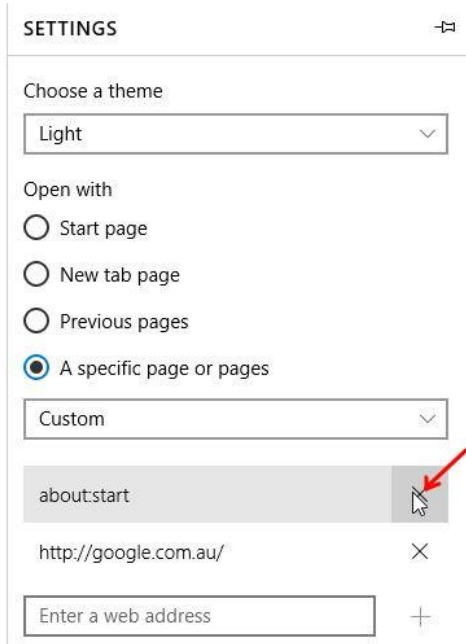
Now under *Open with*, select *A specific page or pages*



In the drop down box, select *Custom* then type *google.com.au* in the text box (where it says *Enter a web address*), then click the **+** sign to add google to the list



Now click the **X** next to *about:start* to remove that entry



It should now look like this – the next time you start Edge, you should see the Google page.

