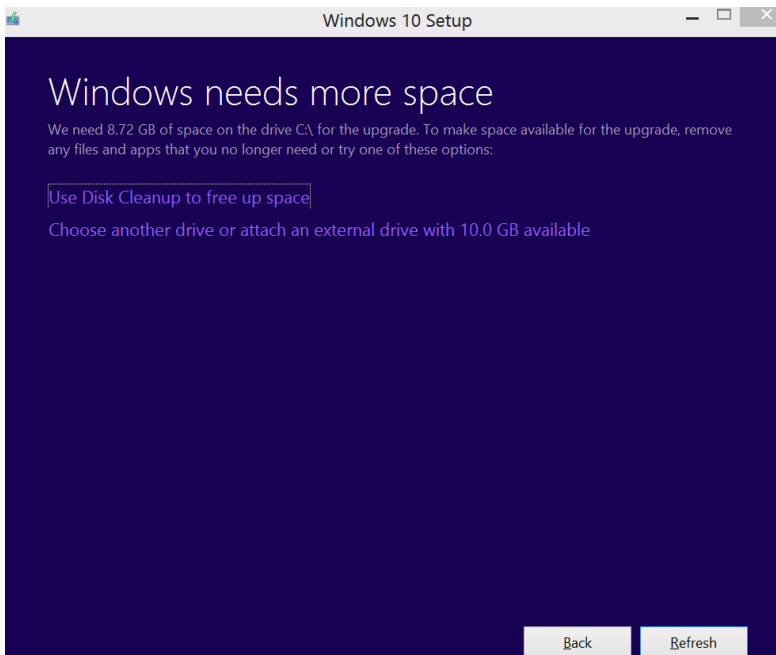


Windows 10 – Install or upgrade Windows 10 on computers with limited disk space

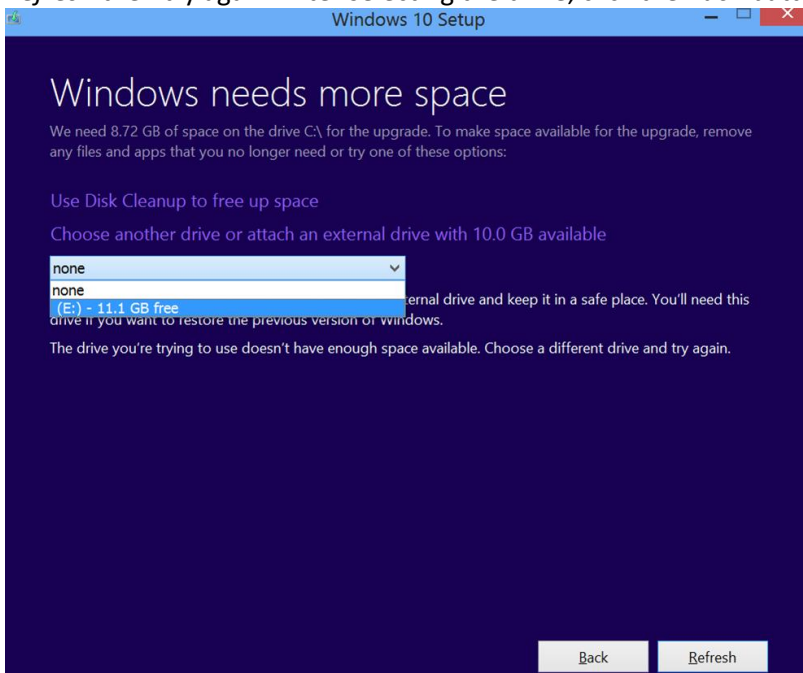
The Windows 10 installer needs at least 10GB of disk space to install or upgrade. If you have limited disk space on your computer you can tell it to use a USB disk which is 16GB or better, and has at least 10GB of free space. If the installer complains that it needs more space, it will offer two options:

1. *Use Disk Cleanup to free up space*
2. *Choose another drive or attach an external drive with 10.0 GB available*



The second option allows you to attach a USB hard disk or USB thumb drive; or point to another partition with enough space to do the installation. Connect the USB disk, then click *Choose another drive or attach an external drive with 10.0 GB available*.

Click the list box then choose the drive with 10 GBs or more space. If the storage device does not show up, click *Refresh* then try again. After selecting the drive, click the *Back* button



Windows 10 setup will now validate the install. Click *Install* to begin the installation.